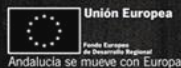


octagon
esedos



Andalucía



Andalucía BIKE RACE

PRESENTED BY
CAJA RURAL
JAÉN



JAÉN • CÓRDOBA
25 Feb • 01 Mar 2020

10 YEARS
MORE THAN
MOUNTAIN BIKE



RACE GUIDE

www.andaluciabikerace.com

#ABR2020



@AndBikeRace



















































































































































































































































































































SIGN-UP



Check that you are correctly registered through www.andaluciabikerace.com

LICENCES

I HOLD A LICENSE:

You must have a competitive cycling license, issued by a national cycling federation approved by the UCI. Touring and other sports licenses are not accepted.

I DON'T HOLD A LICENSE:

You must pay for a temporary license for the event, which price is 72 € and can be issued when collecting the race number.

REGISTRATION

Day: Monday, 24th February 2020

Time: from 4pm to 8pm

Place: Complejo Polideportivo La Salobreja | Ctra. la Guardia, s/n, 23003 Jaén

Map: see map [here](#).

REMEMBER

- Race numbers will not be given the same day of the race, nor at other times.
- You must bring the original ID card and the UCI license in case of having one.
- A companion can pick up your race number if s/he brings a photocopy of your documentation and an authorization.

BRACELETS

All riders receive **two numbered bracelets** according to their bicycle's number plate and back number:

1. RIDER (plastic): must be always worn on the wrist. It's to identify you, collect your bike from the bicycle parking and enjoy different services and offers.
2. BAG (paper): must be put on a visible place of the backpack or bag left in the cloakroom.

TEAMS CLASIFICACION

There's a team classification in which the best woman and two best men are taken into account. The team must be made up by a minimum of three people (a woman and two men), and a maximum of five (two women and three men). Each team member competes individually in its corresponding category. i.e. the team is not forced to remain together.

Register your team:
info@andaluciabikerace.com

LOST ITEMS STICKERS

You will receive a pack of 12 stickers to place on the objects that you think may be susceptible to loss (mobile, GPS device, wallet, ...)



*If you want to follow the race live, you need to download the Official App of **Cronochip Live**:*



LIVE TIMING

Telegram is a free mobile messaging application focused on speed and security. In order to keep all participants, teams, companions, followers and cycling enthusiasts informed and updated, we have created a free and PUBLIC CHANNEL.

To join the channel, you just have to download the application through Google Play or iTunes and search

"ANDALUCÍA BIKE RACE 2020" or @ ABR_2020.

https://t.me/ABR_2020

YOU WILL RECEIVE INFORMATION FROM:

- Schedule
- List of classifications
- List of exit drawers
- Weather forecast
- Award delivery notification
- Paddock location
- Actions of our sponsors and suppliers

TELEGRAM



MARKING

The route is marked with red (Flash Stage, stages 2, 3, 4 and NISSAN Navara Super Stage) or orange (BUFF® Finisher Stage) arrows. White signs with a cross of the stage's colour, indicate wrong way.



- **ELITE MEN:** White: 1 – 199
- **ELITE WOMEN:** Pink: 201 – 249
- **MASTER WOMEN:** Pink: 251 – 299
- **MASTER 30:** Yellow: 301 – 499
- **MASTER 40:** Green: 501 – 699
- **MASTER 50:** Blue: 701 – 799



RACE NUMBERS & CATEGORIES

IN CASE OF AN ACCIDENT

- **LICENSE HOLDERS:** contact the insurance company of your federation.
- **NON LICENSE HOLDERS:** go to the Race Office.

S.O.S. telephone: **+34 667.581.345** (only in case of an emergency or crash)

According to the enclosure's regulations where the race is located, the access and parking of motor homes and/or similar vehicles is **restricted**. There's space around this enclosure for these vehicles, aside from the race's organisation and following the legal regulations of the town.

MOTORHOMES

PADDOCK

The paddock is a space reserved for sponsors or teams that have previously booked it, and open to riders, companions and spectators, where the Race Office and the different services are located.

To hire a paddock space, contact:
mireia.sola@octagon.com



FREE SERVICES

BICYCLE WASHING AREA by KH7



MEDICAL SERVICE



FEED STATIONS



OTHER ACTIVITIES



See Agenda

VEHICLE PARKING



BICYCLE PARKING



SHIMANO OFFICIAL SERVICE



W.C. & SHOWERS



GUARDARROPA



EXPO AREA & TEAMS PADDOCK

MASQUEBICI
OFFICIAL
SERVICES



FOR MORE INFORMATION:

info@masquebici.com

+34 654 178 571

<http://www.masquebici.com/>

MECHANICAL SERVICE

MASSAGE SERVICE

IMPORTANT:

According to the regulations of the Royal Spanish Cycling Federation (RFEC), foreign riders with a cycling license not issued by the RFEC, must have a written authorisation from their national cycling federation that certifies that its insurance is valid in Spain. This document must be shown to the Commissaires in order to collect the race number.



WARNINGS

COMPRESSION GARMENTS

Stocking are not permitted and socks must not exceed the calves

ONBOARD CAMERAS

Onboard cameras are not permitted except authorised by the UCI Commissaires.

TEAM MANAGERS

All **Team Managers** and staff **must be authorised** to access the Feed Stations and start/finish area. The accreditations will be delivered only and exclusively at the Teams Meeting on Monday 24 February at 8 p.m..

DOPING CONTROL

The current UCI's anti-doping rules and regulations will be applied in its entirety at the event.

The controls will be conducted by the Cycling Anti-Doping Foundation (CADF) at the following locations:

25.02. Jaén | 26.02. Jaén | 27.02. Andújar | 28.02. Priego de Córdoba | 29.02. Córdoba | 01.03. Córdoba

VENUE LOGISTICS



UCI SHC



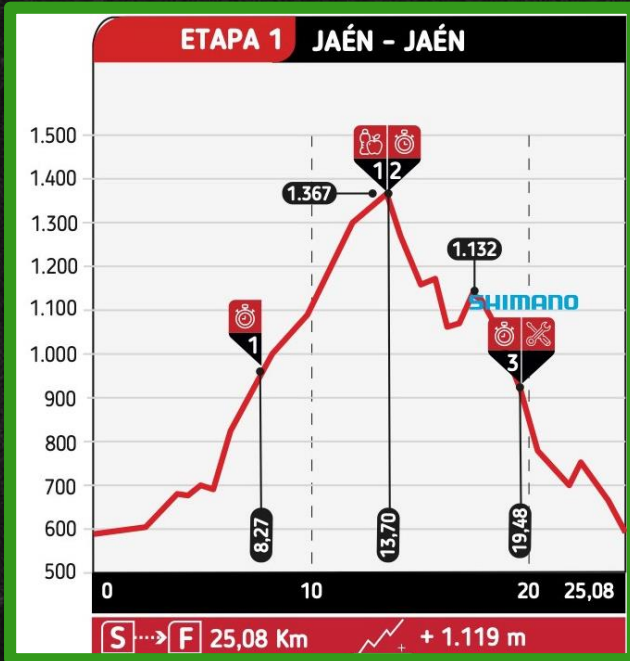
JAÉN • CÓRDOBA
25 Feb • 01 Mar 2020

10 YEARS
MORE THAN
MOUNTAIN BIKE

FLASH STAGE | XCT

STAGE 1

RED ARROWS



SEE LOCATION

SERVICE	LOCATION	KM	COORDINATES	FIRST	LAST
	Plaza de Santa María	0	37.764848,-3.790580	13:00	16:30
1	Cruce de caminos	13,5	37.742674,-3.843725	14:13	17:31
	Plaza de Santa María	25,08	37.764848,-3.790580	14:50	17:57



SEE ROUTE

TUESDAY 25TH FEBRUARY | JAÉN

09:00 - Paddock, Race Office & bicycle parking aperture

09:00 - Services begin

13:00 - FLASH STAGE begins (XCT)

18:00 - Award ceremony

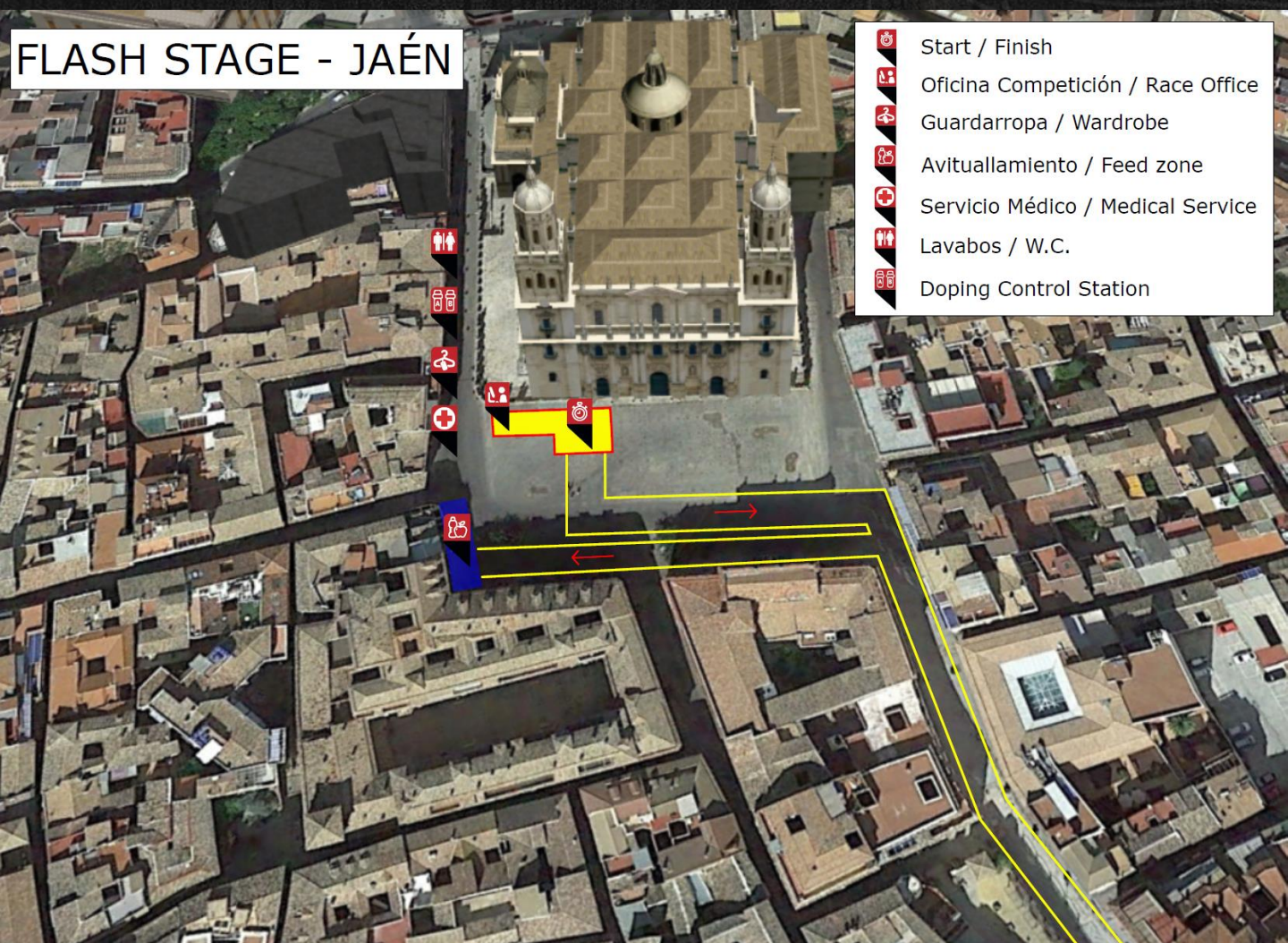
19:00 - Services end and Paddock & Race Office closure

20:00 - Bicycle parking closure

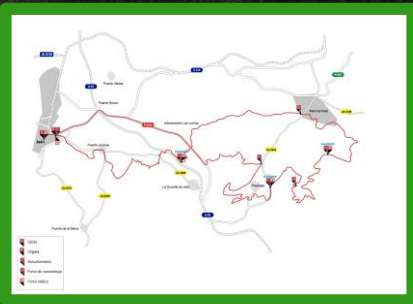
VENUE MAP

FLASH STAGE - JAÉN

FLASH STAGE - JAÉN



- Start / Finish
- Oficina Competición / Race Office
- Guardarropa / Wardrobe
- Avituallamiento / Feed zone
- Servicio Médico / Medical Service
- Lavabos / W.C.
- Doping Control Station



SEE ROUTE

STAGE 2 | XCM RED ARROWS



SERVICE	LOCATION	KM	COORDINATES	FIRST	LAST
	Calle Bernabé Soriano	0	37.767063,-3.787325	10:00	10:05
1	Paseo del Puerto	27,46	37.742616,-3.637023	11:13	12:58
2	Carretera del Almadén	40,50	37.757595,-3.597363	11:51	14:33
3	La guardia de Jaén	57,98	37.754046,-3.698073	12:29	15:53
	Estadio Atlético La Salobreja	71,93	37.767835,-3.779922	13:05	17:23



SEE LOCATION

WEDNESDAY 26TH FEBRUARY | JAÉN

08:30 a 10:00 - Bicycle parking aperture

09:00 - Services begin and Paddock & Race Office aperture

09:40 - Start grids call-up

10:00 - STAGE # 2 start

13:05 - Expected arrival of the first participant

13:40 - Award ceremony

19:00 - Services end and Paddock & Race Office closure

20:00 - Bicycle parking closure

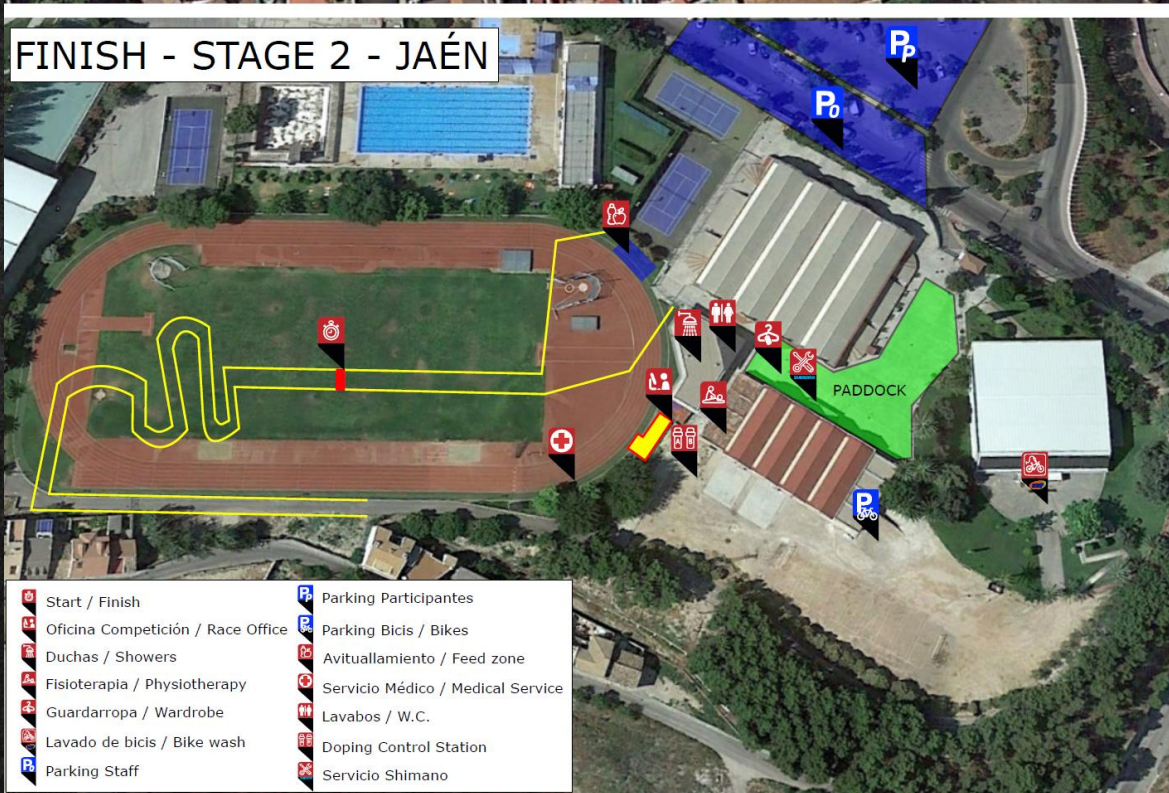
VENUE MAP

STAGE 2 - JAÉN

START - STAGE 2 - JAÉN



FINISH - STAGE 2 - JAÉN





SEE ROUTE

STAGE 3 | XCM RED ARROWS



SERVICE	LOCATION	KM	COORDINATES	FIRST	LAST
	Avenida de Lisboa	0	38.038054,-4.040061	10:00	10:05
1	Entrada en JA-5001	23,49	38.088497,-4.189329	10:58	12:20
2	Santuario Virgen de la Cabeza	50,42	38.153095,-4.044017	12:01	14:46
	Avenida Lisboa	69,79	38.038795,-4.042753	12:49	16:41



SEE LOCATION

THURSDAY 27TH FEBRUARY | ANDÚJAR

08:00 a 10:00 - Bicycle parking aperture (Jaén)
 09:00 - Services begin & Paddock aperture (Andújar)
 09:40 - Start grids call-up
10:00 - STAGE # 3 start
 12:49 - Expected arrival of the first participant
 13:30 - Award ceremony
 17:00 - Race Office clousure (Andújar)
 17:00 - Bicycle parking aperture (Córdoba)
 19:00 - Services end and Paddock closure (Andújar)
 20:00 - Bicycle parking closure (Córdoba)

VENUE MAP

STAGE 3 - ANDÚJAR

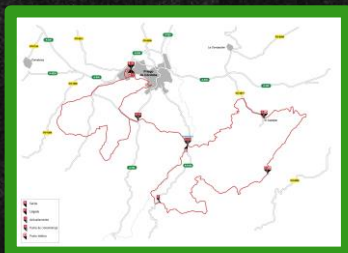
STAGE 3 - ANDÚJAR

Ociosur Polideportivo

Avd Juan Pablo II, s/n
23740 Andújar
← 3 min

PADDOCK

- Start / Finish
- Oficina Competición / Race Office
- Duchas / Showers
- Fisioterapia / Physiotherapy
- Guardarropa / Wardrobe
- Lavado de bicis / Bike wash
- Avituallamiento / Feed zone
- Servicio Médico / Medical Service
- Lavabos / W.C.
- Doping Control Station
- Servicio Shimano



SEE ROUTE

STAGE 4 | XCM RED ARROWS



SERVICE	LOCATION	KM	COORDINATES	FIRST	LAST
	Parque Niceto Alcalá Zamora	0	37.442349,-4.212338	11:00	11:05
1	Rio Salado	17,9	37.407444,-4.179049	11:45	12:45
2	Cruce de caminos	32,53	7.394012,-4.133744	12:31	14:46
3	Rio Salado	51,5	37.407444,-4.179049	13:05	16:05
	Parque Niceto Alcalá Zamora	57,93	37.442349,-4.212338	13:30	17:01

FRIDAY 28TH FEBRUARY | PRIEGO DE CÓRDOBA

08:00 a 10:00 - Bicycle parking aperture (Córdoba)

10:00 - Services begin & Paddock aperture (Priego de Córdoba)

10:40 - Start grids call-up

11:00 - STAGE # 4 start

13:30 - Expected arrival of the first participant

14:00 - Award ceremony

17:00 - Race Office clousure (Priego de Córdoba)

17:00 - Bicycle parking aperture (Córdoba)

19:00 - Services end and Paddock closure (Priego de Córdoba)

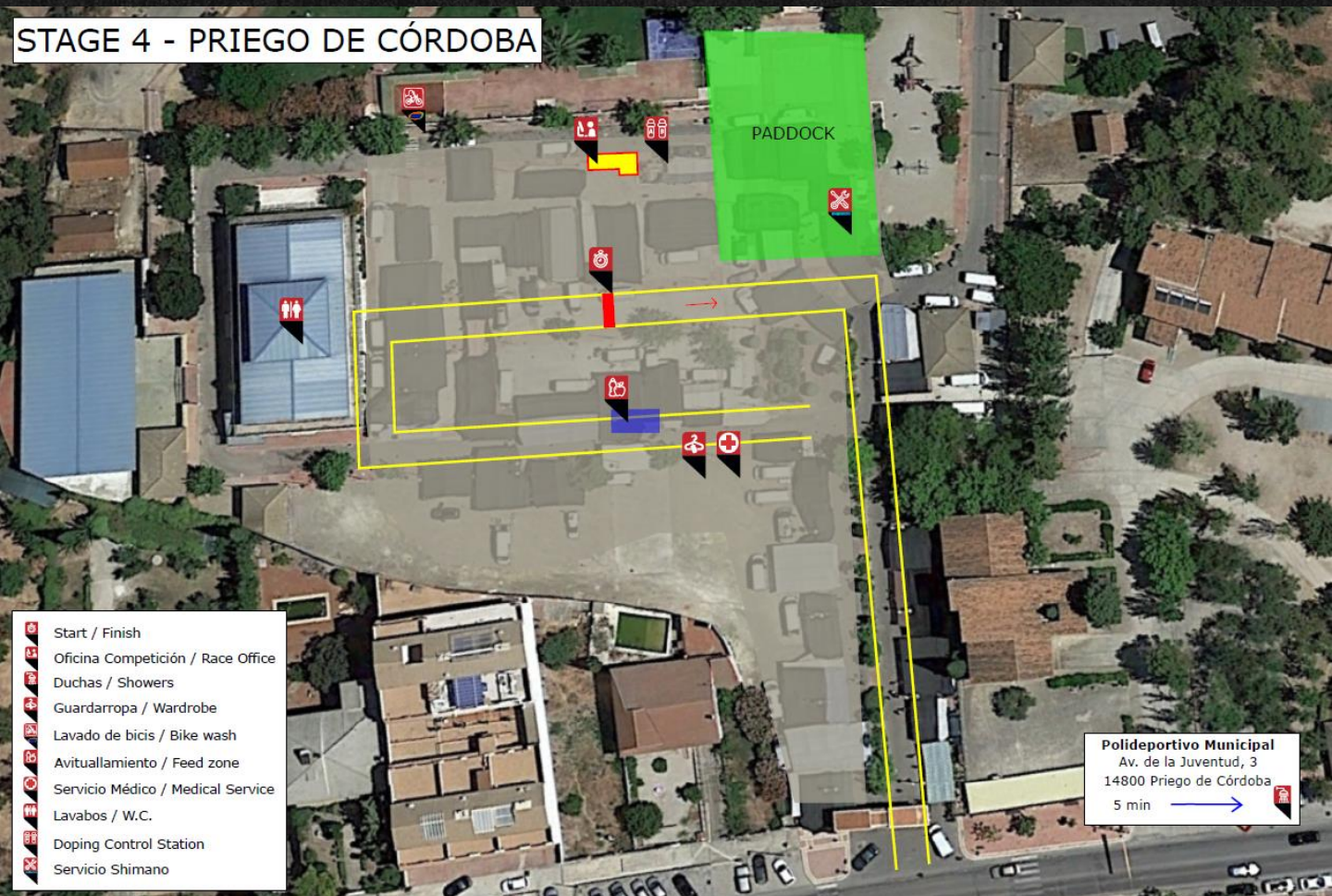
20:00 - Bicycle parking closure (Córdoba)



SEE LOCATION

VENUE MAP

STAGE 4 - PRIEGO DE CÓRDOBA





NAVARA

SUPER STAGE | XCM STAGE 5 RED ARROWS



SERVICE	LOCATION	KM	COORDINATES	FIRST	LAST
	Avenida Al-Nasir	0	37.893109,-4.779982	10:00	10:05
	Vientos del Guadiato	32,48	37.938641,-4.917249	11:25	13:19
	Canal del Guadalmellato	50,88	37.892492,-4.823677	12:09	14,59
	Calle del Arroyo	70,60	37.922217,-4.789313	13:02	17:04
	Parque de la Asomadilla	83,70	37.903153,-4.778063	13:35	18:16



SEE ROUTE



SEE LOCATION

SATURDAY 29TH FEBRUARY | CÓRDOBA

08:30 a 10:00 - Bicycle parking aperture

09:00 - Services begin and Paddock & Race Office aperture

09:40 - Start grids call-up

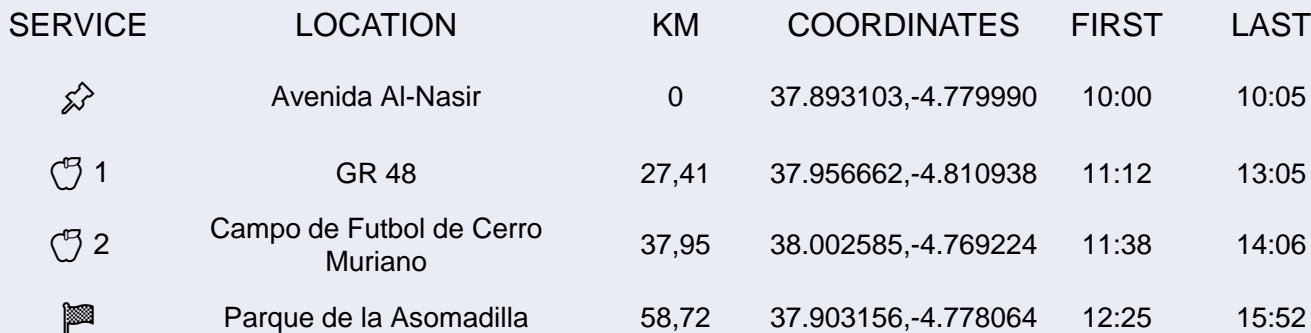
10:00 – NISSAN NAVARA SUPER STAGE start

13:35 - Expected arrival of the first participant

14:14 - Award ceremony

19:00 - Services end and Paddock & Race Office closure

20:00 - Bicycle parking closure



08:30 a 10:00 - Bicycle parking aperture
09:00 - Services begin and Paddock & Race Office aperture
09:40 - Start grids call-up
10:00 - BUFF® FINISHER STAGE start
12:25 - Expected arrival of the first participant
13:30 - Final award ceremony
17:00 - Services end
17:00 - Paddock, Race Office & bicycle parking closure

VENUE MAP CÓRDOBA



HAVE YOU FINISHED #ABR2020?

FINISHER MEDAL

If you have finished the six stages obeying the regulations, you will be awarded a **Finisher medal** and **BUFF®** which is given after crossing the finish line of the last day.



AWARD CEREMONY

The top five riders of each category and the three best teams must go to the podium **dressed in their racing kit**.

PHOTOGRAPHY

Sportograf will take photographs of all the riders. They will be available on its website (www.sportograf.com) once the race is over.

DIPLOMA

A few days after finishing the event, you will receive an email with a link to download your diploma.



PRIZE MONEY

The UCI Elite riders who carry prize money, and as a novelty the winners from the team classification, must complete and submit all the documentation requested by the organisation via e-mail.

SATISFACTION SURVEY

Your opinion is very important. We will send you a short survey so that you value the event. Doing so, you will enter the draw of entries for upcoming BIKE RACE by Octagon Esedos.

¡HAPPY TRAILS!

EVENTS DIRECTOR- Aitor Jimenez

RACE DIRECTOR - Jordi Mas

SPONSORSHIP - Manel Troyano

PADDOCK & TEAMS - Mireia Sola

REGISTRATION & ANTIDOPING & ACCIDENTS - Eli Sivera

LOGISTICS - Carlos Jimenez

PARTICIPANT SERVICE - Laura Allué

ALL THE INFORMATION HERE



RACE OFFICE



info@andaluciabikerace.com



SHIMANO

HUTCHINSON



NAVARA

